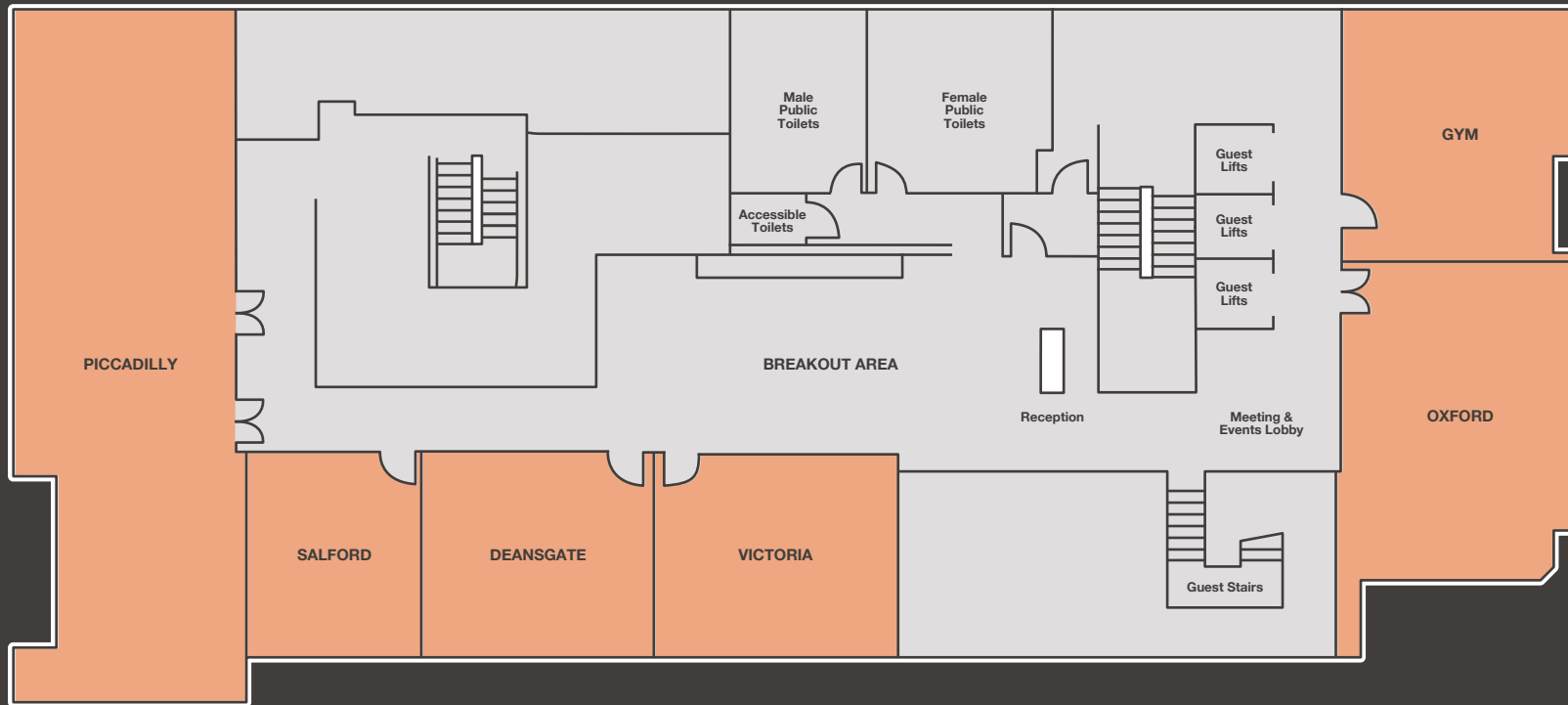








Manchester City Centre Floorplan



MEETING ROOM CAPACITIES

Room							Area Sq m	Room Length (metres)	Room Width (metres)	Room Height	Natural Daylight
	THEATRE	CABARET	BOARDROOM	U-SHAPE	CLASSROOM	BANQUETING					
Piccadilly	140	78	40	40	60	100	128	19.4	6.6	2.9	Yes
Salford	41	16	12	12	18	20	34	5.6	6.2	2.5	Yes
Deansgate	48	18	16	16	18	20	42	6.8	6.2	2.7	Yes
Victoria	-	-	18	-	-	-	45	7.4	6.2	2.7	Yes
Oxford	60	30	30	26	27	40	65	9.5	6.9	2.7	Yes



CLAYTON
HOTELS